



FIRST 18





A boat that relies on performance thanks to a very light displacement. Ideal for beginners because the set up is very fast.

- Retractable keel: allows to beach during raids
- A twin-rudder system for better control
- A gradual chined hull, very light structure, carbon mast and bowsprit mean that she starts planing earlier than other boats, which are glued to the spot.
- Straight to the web, allowed muscular conditions

The snuffer on deck makes for quick manoeuvring in the cockpit, sending up and balancing the spinnaker in a flash.

Good course even upwind.

Laminated top square mainsail

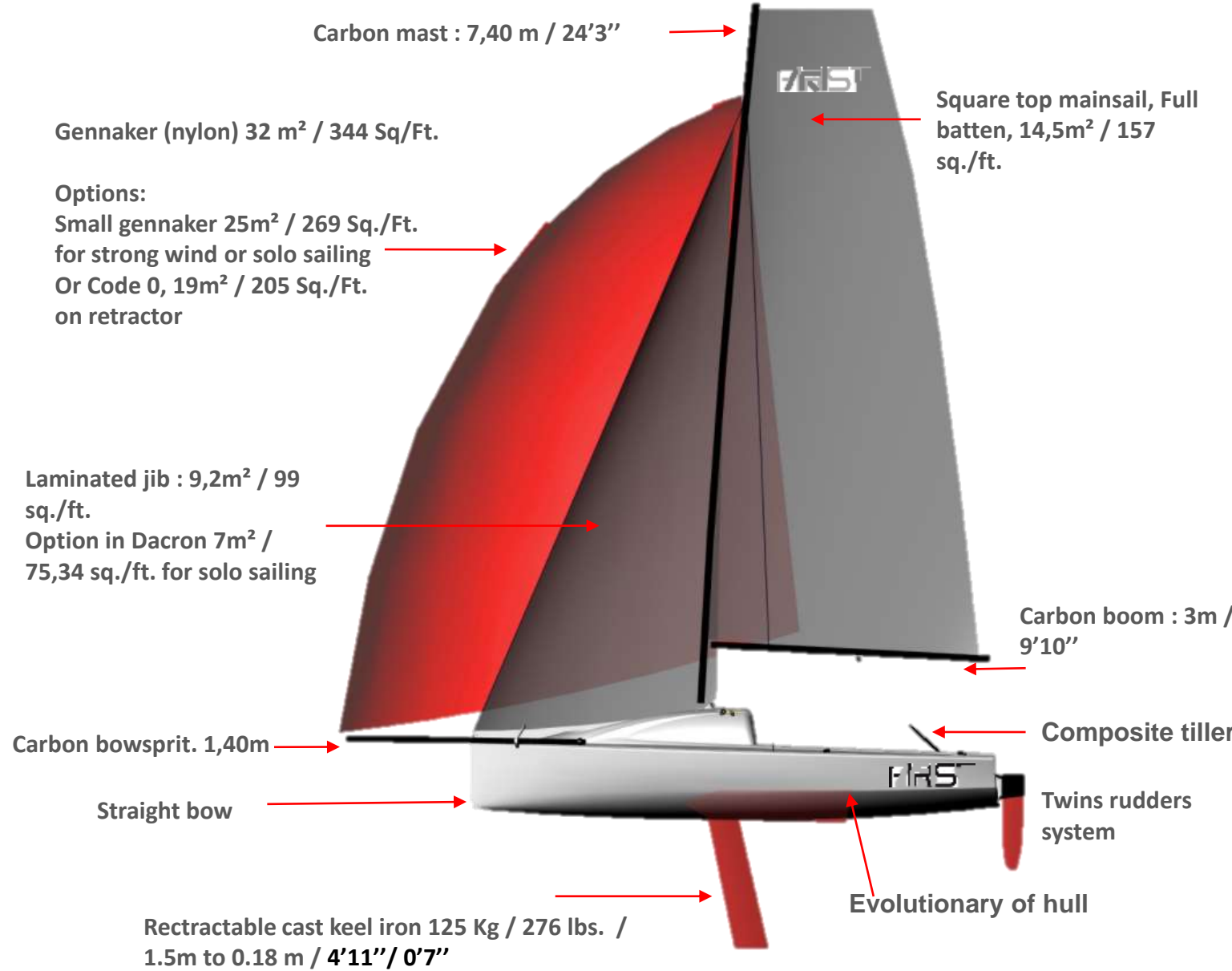
A very dynamic regatta circuit makes possible to confront many crews in one-design.

The boat takes roughly 45 minutes to prepare.

UNSINKABLE AND TRANSPORTABLE

Technical data

Length (L.O.A) 5,50 m / 18' 1"
 Beam 2,37 m / 7' 9"
 Main sail area 14,5 m² / 157 sq./ft.
 Jib area 9,2 m² / 99 sq./ft.
 Draft (standard keel) 1,5 m / 0,18 m / 4'11" / 0'7"
 Draft (shallow keel) 1,1 / 0,3 m / 3'7" / 1'
 Keel weight (standard keel) 125 kg / 276 lbs.
 Keel weight (shallow keel) 145 kg / 320 lbs.
 Light displacement 567 kg / 1250 lbs.
 Mast height (above the deck) 7,40 m / 24'3"
 Boom (carbon fiber) 3,00 m / 9'10"
 Bowsprit (carbon fiber) 1,40 m / 4'7"
 Hull/deck material GRP
 In-submersibility volume 9,2m³ / 99 sq. /ft.
 CE design category C4
 Naval architect Manuard YD
 Air draft 8,52 m / 27'11"
 Height on trailer 2,40 m - w/o mast 1,85 m
 Length with trailer 7,40m – w/o mast 7,20 m

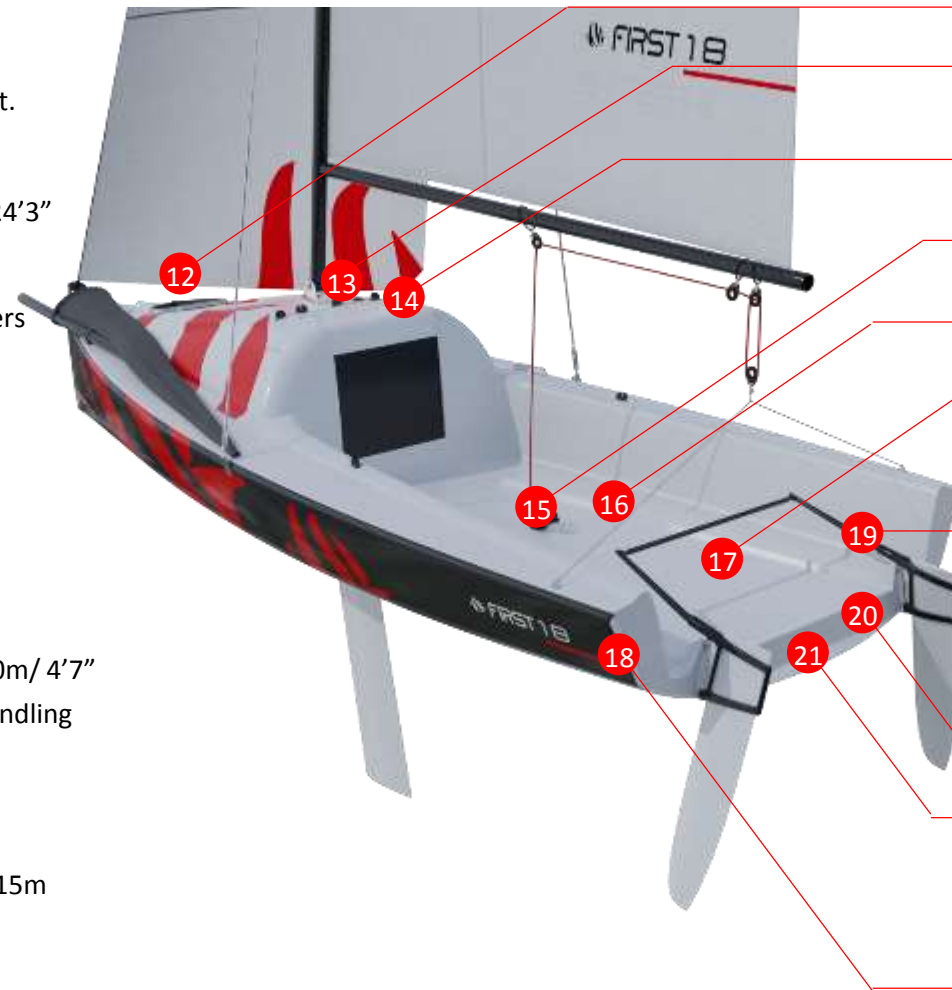




- 1 Fully crewed sailing
- 2 Single handed sailing
- 3 Cruising
- 4 Trailable
- 5 One design regatta community with rich adventure racing calendar



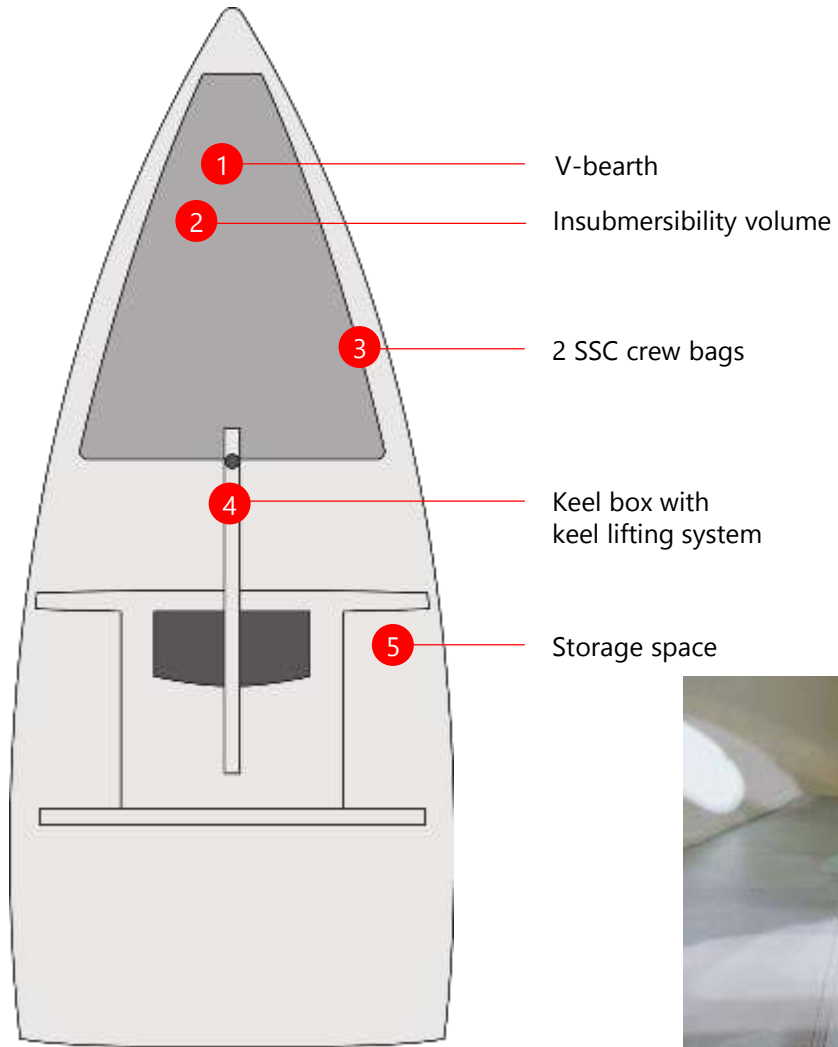
- 1 Standard gennaker 32 m²/ 344 sq.ft.
Heavy gennaker 25m²/ 269 sq.ft.
Furling Code 0 19 m²/ 204 sq.ft.
- 2
- 3
- 4 Deck stepped carbon mast 7,4 m/ 24'3"
- 5 Jib 9,2 m²/ 99 sq.ft.
- 6 Self standing mast without spreaders
- 7 Square top mainsail, Full batten, 14,5m²/ 156 sq.ft.
- 8 Carbon boom 3m/ 9'10"
- 9 On-deck retractable bowsprit 1,40m/ 4'7"
- 10 Retractable keel 125 kg / 1.5 to 0.15m
- 11 Twin rudders system
- 12 Snuffer for effortless gennaker handling



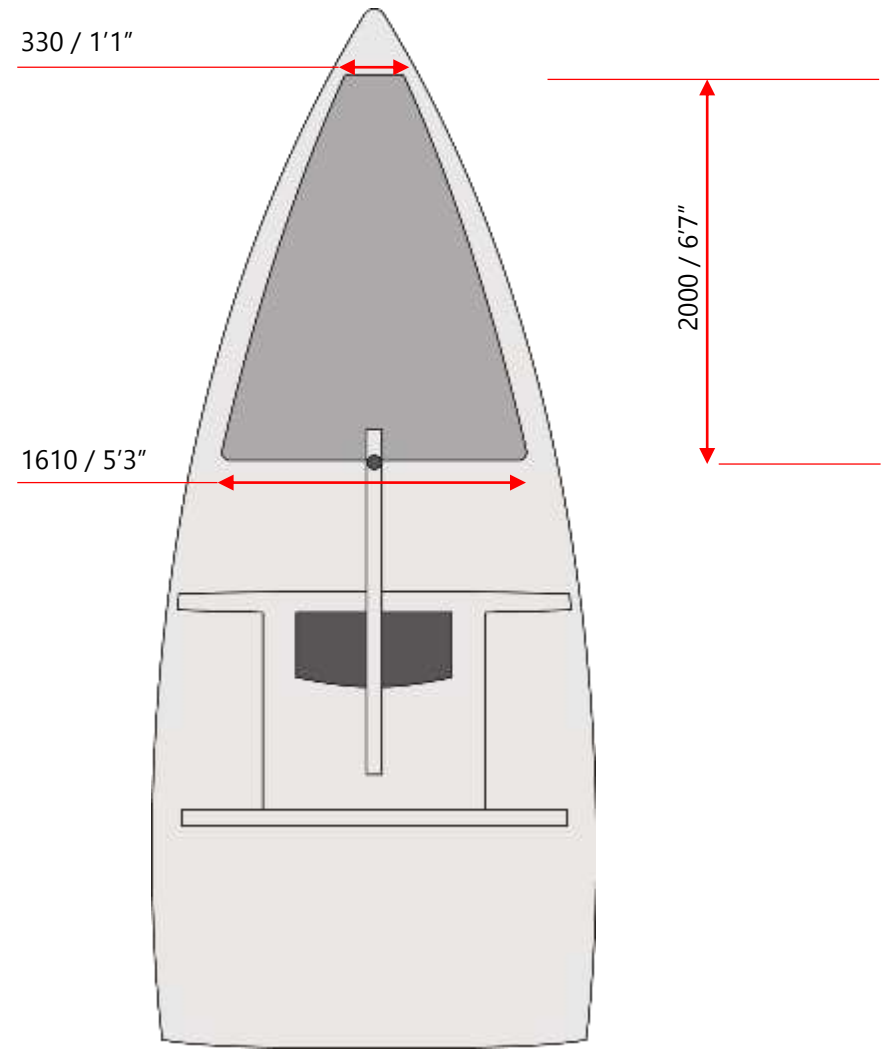
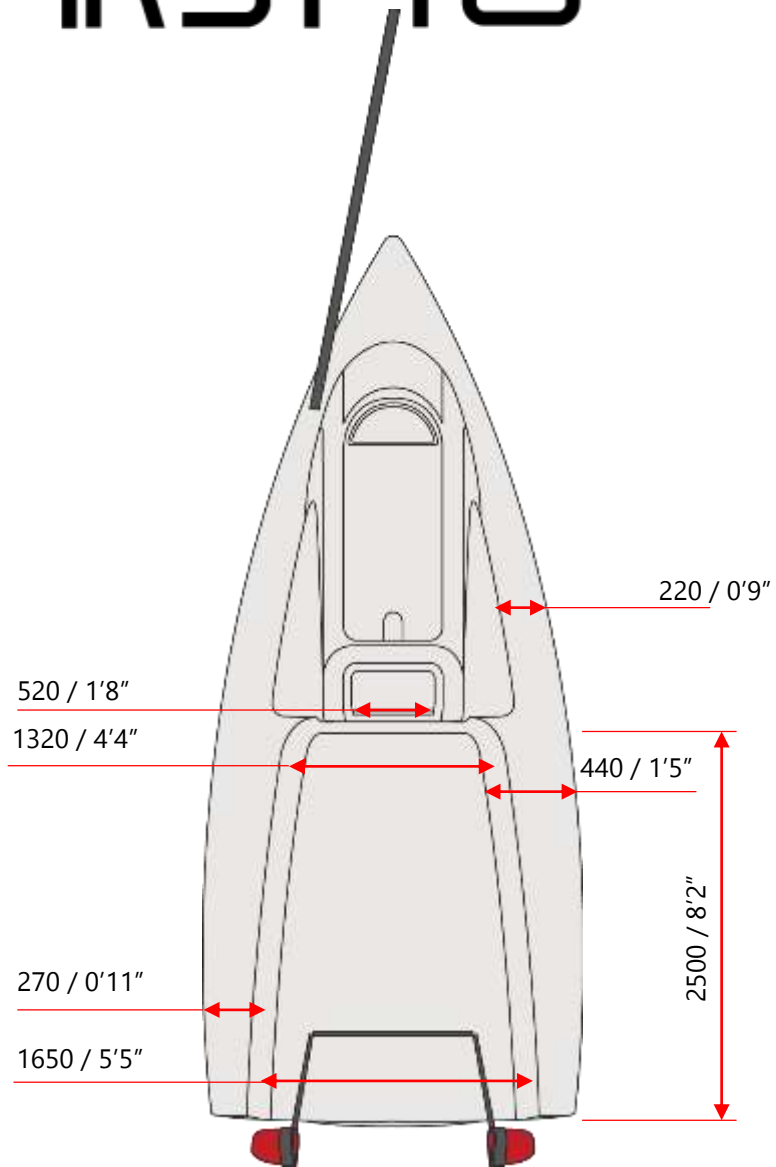
- 12 Hatch for ventilation/light
- 13 Single/double/fully crewed optimized deck layout
- 14 Smart code-lock companionway
- 15 Clean and spacious cockpit
- 16 Toerails with footstraps
- 17 Storage room under the cockpit
- 18 Carbon tillers
- 19 Outboard engine bracket
- 20 GRP sandwich hull and deck structure
- 21 Chined hull
- 22



Features



Dimensions
(mm)



Smart

Safe

Fast



Easy to handle



FRIENDLY



FIRST 18

Very Dynamic class

FAST





Easy to set up



**Two people
recommended**



**45 min
preparation**



- 6 & 13mm open spanner
- pliers
- knife
- A set of Allen keys



Not only a boat



Huge & friendly community



Sail fast, sail safe

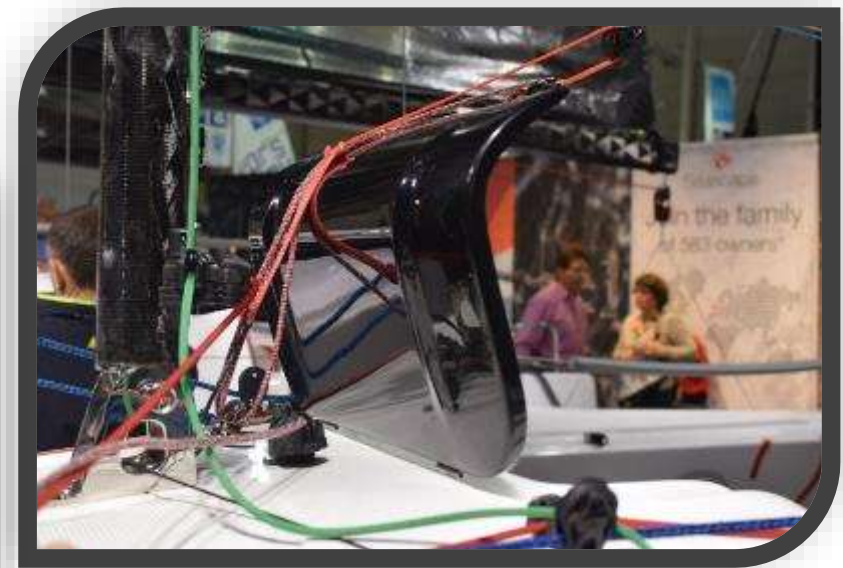


Simple well-designed build

Simple & high-performance deck gear
(Ronstan)



Watertight door



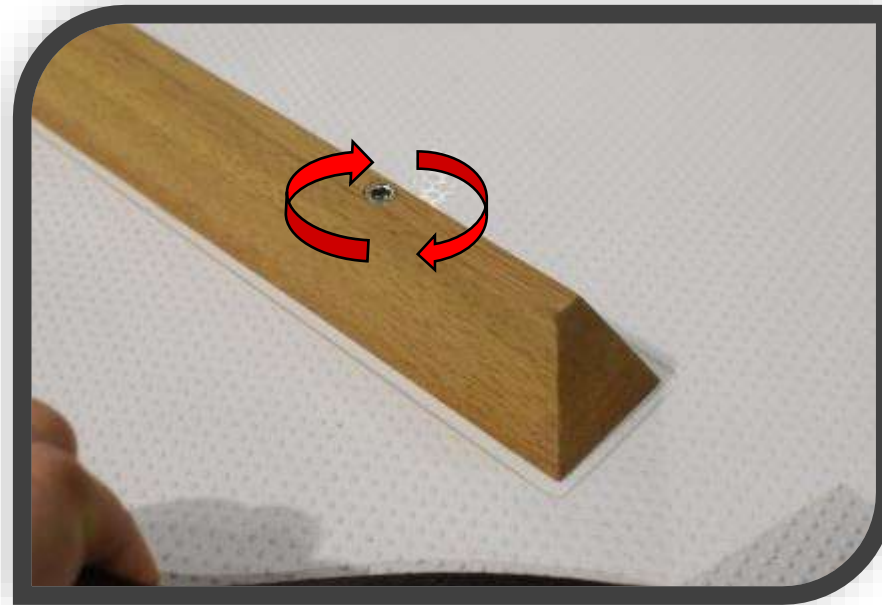
Plexiglass companionway door





Engine mount

Easy to dismantle



Movable foot bar

Comfort in the cockpit



Tiller system

Simple and robust



Watertight hatch:
Access to the rudder system



Qualitative rigging



Genoa halyard system & furler

Practical and easy



Gennaker snuffer bag

Easy to manoeuvre



Keel system

17 turns of the crank handle



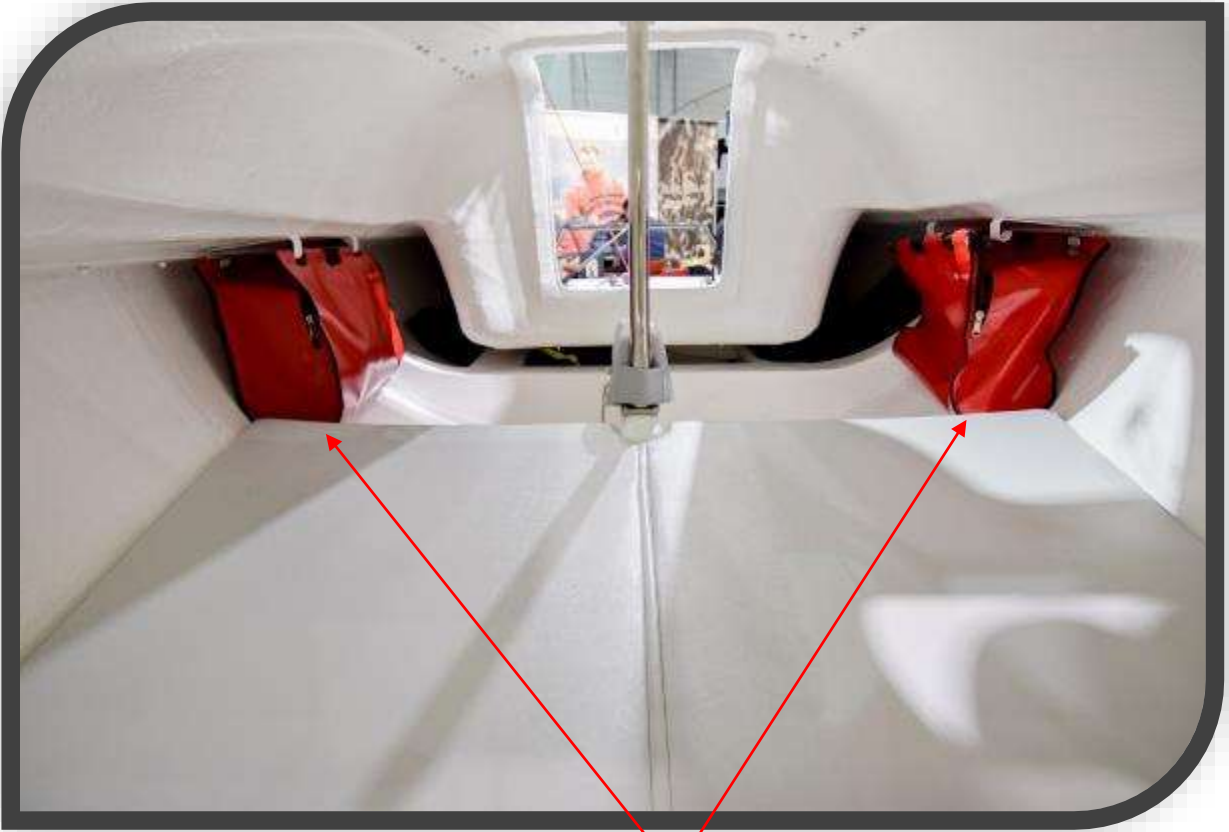
Easy to handle

Electric engine
Torqeedo
(option)

A spacious 18 foot boat



Keel head



Storage bags as option, can be hung on the boat

FIRST



Let the dream come true