

OCEANIS 40.1

E-BOOK



BENETEAU
AVANT-GARDE IN BOATING

Key Points

Provisional Specifications (*boat in process of certification)

GENERAL SPECIFICATIONS*

• L.O.A	12,87 m / 42'3"
• Hull length	11,99 m / 39'4"
• L.W.L.	11,70 m / 38'5"
• Beam	4,18 m / 13'9"
• Standard draft (Cast iron)	2,17 m / 7'1"
• Deep ballast weight	2 007 kg / 4,423 lbs
• Shallow draft (Cast iron)	1,68 m / 5'6"
• Shallow ballast weight	2 237 kg / 4,930 lbs
• Performance draft (Cast iron)	2,27 m / 7'5"
• Ballast weight performance	2 004 kg / 4,417 lbs
• Air draft (without antenna)	18,33 m / 60'2"
• Air draft (Performance mast)	18,78 m / 61'7"
• Light displacement	8 180 kg / 18,290 lbs
• Fuel capacity (standard)	195 L / 52 US Gal
• Fresh water capacity (standard)	235 L / 62 US Gal
• Fresh water capacity (Option)	330 L / 87 US Gal
• Engine power :	
- Shaft Line	45 CV CR / 45 HP CR

EC CERTIFICATION *

• Category A	10 personnes
• Category B	10 personnes
• Category C	10 personnes

NAVAL ARCHITECT / DESIGNERS

• Naval Architect:	Marc Lombard
• Interior Design:	Nauta Design

SAILS DIMENSIONS

• Furling mainsail (standard)	42,40 m ² / 456 sq/ft
• Self-tacking jib (standard)	27,40 m ² / 295 sq/ft
• Classic mainsail	42,40 m ² / 456 sq/ft
• Furling genoa (105 %)	34,30 m ² / 369 sq/ft
• Code 0	61,10 m ² / 658 sq/ft
• I	15,13 m / 49'8"
• J	4,77 m / 15'8"
• P furling mast	14,69 m / 48'2"
• P Classic mast	14,83 m / 48'8"
• E	5,08 m / 16'8"

PERFORMANCE (Extended classic mast + 0,45 m / 1'6")

• Classic mainsail	43 m ² / 462 sq/ft
• Genoa	36,10 m ² / 389 sq/ft
• I	15,65 m / 51'4"
• J	4,78 m / 15'8"
• P	15,40 m / 50'6"
• E	5,00 m / 16'5"

Following in the wake of the new cruiser generation



Smart

New generation hull: the stepped hull increases the habitable volume

Easy

A standard designed to be as simple as possible: in-mast furling system, self-tacking jib, 2 winches on the roof.
Cruising made simple

Comfort large cockpit worthy of a 45' sailing yacht, spacious interior volumes, large berths, natural light and sea view

First Line version, performance mast, deck gear upgrade: to make the most of the hull's potential

A choice of 3 keels to adapt to the sailing grounds or to increase sail stiffness



Oceanis 40.1 E-BOOK

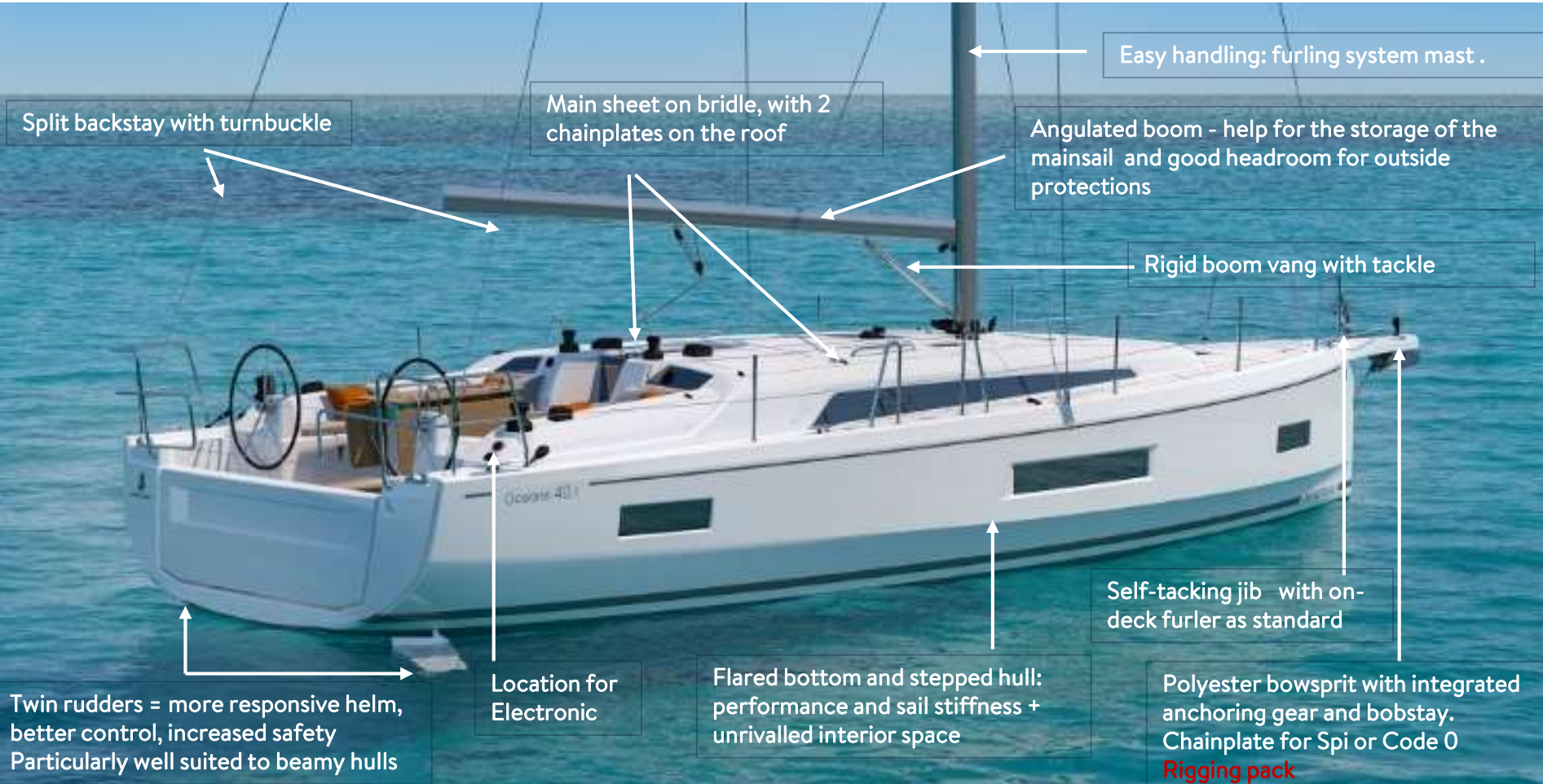
Oceanis know-how: comfort, space and high-performance hull



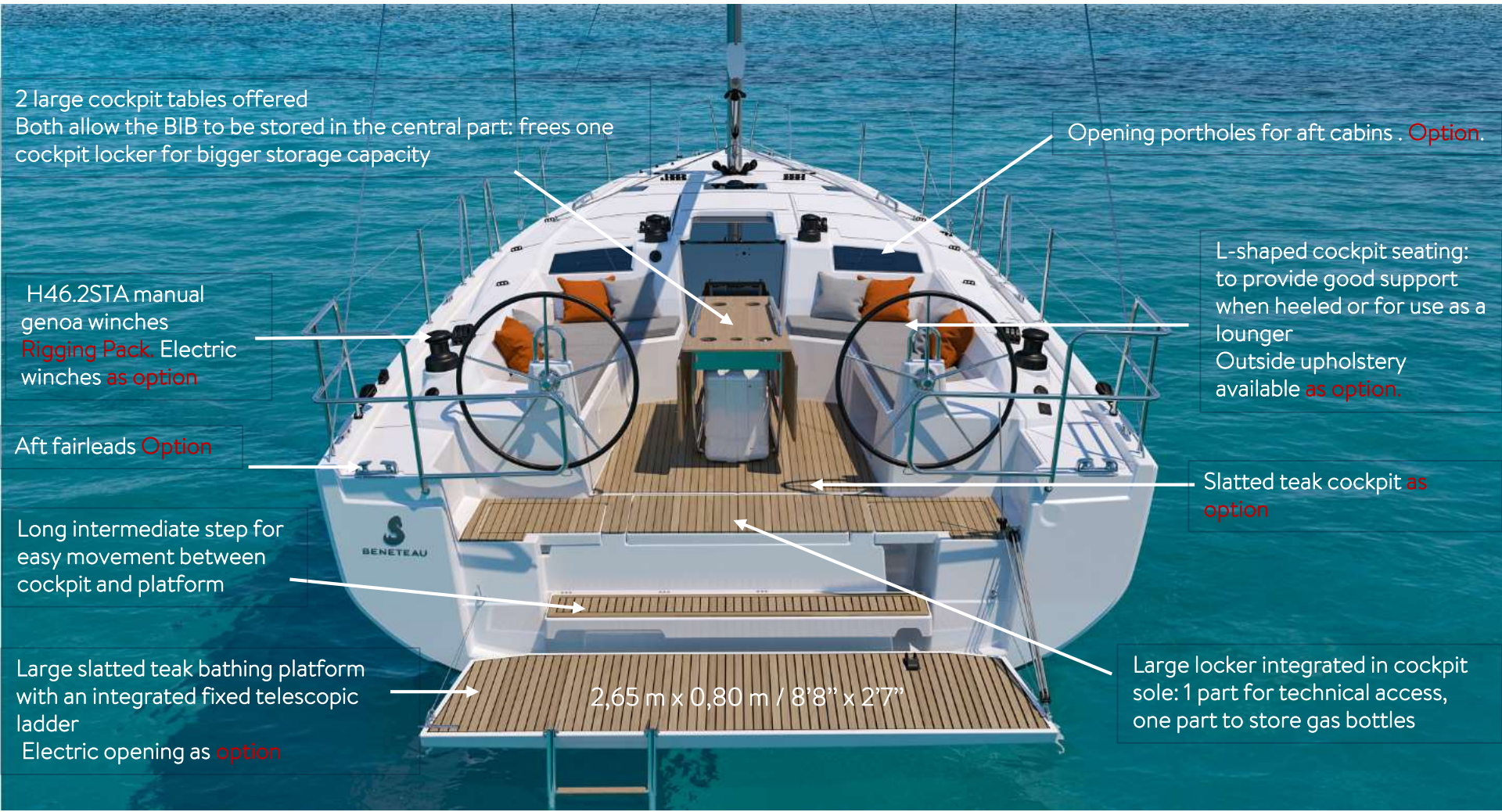
Oceanis know-how: comfort, space and high-performance hull:



Hull - Rigging



Oceanis know-how: comfort, space and high-performance hull:



2 large cockpit tables offered
Both allow the BIB to be stored in the central part: frees one cockpit locker for bigger storage capacity

Opening portholes for aft cabins . **Option.**

H46.2STA manual genoa winches
Rigging Pack. Electric winches **as option**

L-shaped cockpit seating:
to provide good support when heeled or for use as a lounge
Outside upholstery available **as option.**

Aft fairleads **Option**

Slatted teak cockpit **as option**

Long intermediate step for easy movement between cockpit and platform

Large locker integrated in cockpit sole: 1 part for technical access, one part to store gas bottles

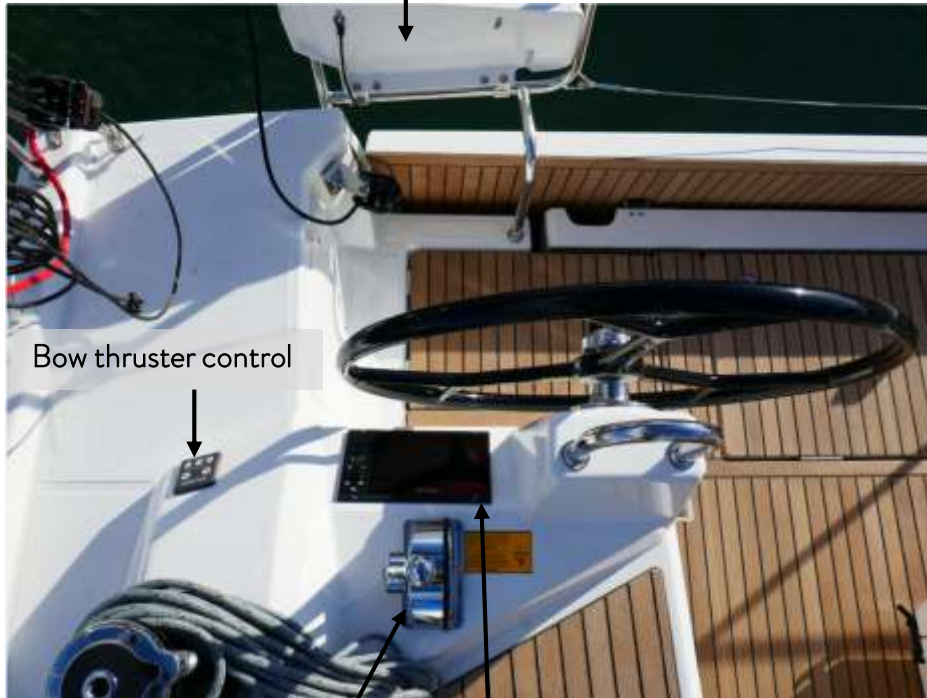
Large slatted teak bathing platform with an integrated fixed telescopic ladder
Electric opening as **option**

2,65 m x 0,80 m / 8'8" x 2'7"

Helm stations

Aft lifting helm seat
Trim Level

Outboard engine bracket
Option



Bow thruster control

Engine control.
Easy access

Coastal Pack: 7" screen
B&G to starboard

Genoa winch + clutches
(Rigging Pack)

Coastal Pack: Triton
display to port

Cockpit

Halyard bags location.
Trim level

Opening portholes in
aft cabins. Option

Genoa winch
(Rigging pack)

Optional 'Luxe' cockpit
table. Refrigeration
unit available as option.

Large locker



2 Self tailing coachroof winches
(H40.2 STA). Standard

Cockpit



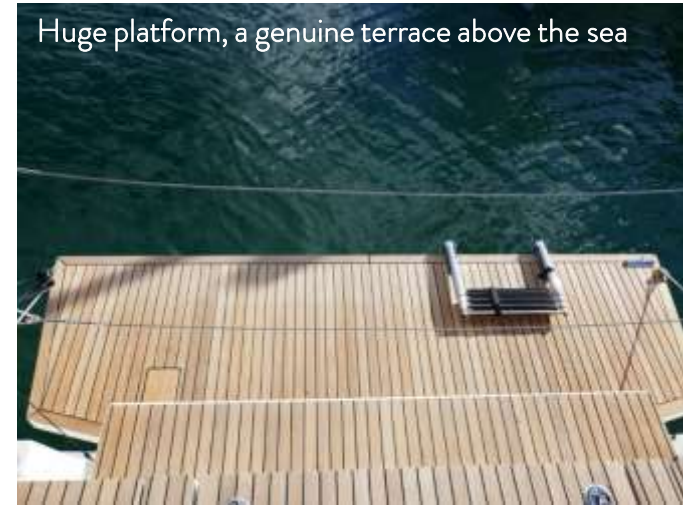
Standard opening portholes for aft cabins



PMMA saloon type companionway door



Foldaway helmsman foot chock



Huge platform, a genuine terrace above the sea



Storage under each bench



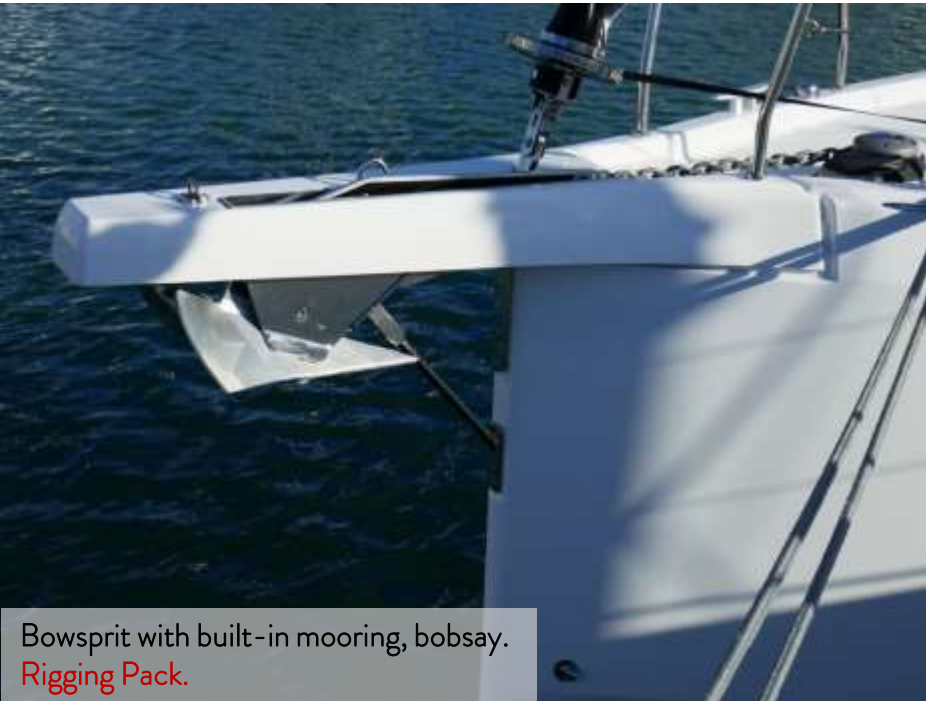
Central cockpit locker:
Technical access + gas locker



Fore deck



Fore deck



Bowsprit with built-in mooring, bobsay.
Rigging Pack.



High-end fittings, extended mast, increased sail area.

A configuration to sublimate the great potential of the hull

- Polyester bowsprit with integrated anchoring gear and bobstay (for Code 0 and asymmetric spinnaker)
- Performance Classical aluminium mast, tapered, (Z Diffusion), 2 Aft swept spreaders (+ 0,45m / 1'6")
- Cascading backstay
- Cathedral type Dyform standing rigging
- Flatdeck genoa furler
- Additional jammers: 1 triple jammer on coaming to port and starboard for mainsail sheet, genoa sheet, adjustment of genoa sheet traveller (hauling line) + 1 single jammer on roof for spinnaker halyard/code 0
- Performance running rigging, Dyneema (Mainsail, Genoa, Code 0, Asymmetric spinnaker, Halyards)
- German system (Two-way mainsheet at the helm station)
- Harken pulleys upgrade (in lieu of standard) - 12 E60 blocks + 4 E80 blocks
- Genoa sheet tracks on side decks + Genoa sheets
- 2 Genoa sheet manual winches (H46.2 STA)
- Black composite steering wheels
- Performance hull decoration

! Boat delivered without sails.
Performance sails as option



An interior that is a joy to live in



Spaces

- A voluminous living space thanks to the stepped hull and the location of the galley towards the bow
- Very balanced height to deck beam
- A fore cabin worthy of a 45' sailing yacht

Comfort

- A long worktop with a good amount of storage space: a galley designed to make life on board easier and cooking meals a pleasure
- Large berths
- Long U-shaped sofa, central seat section removable: excellent seating capacity around the table

Harmony

- Once again, Nauta Design has designed a beautiful boat with lots of natural light, a choice of interior atmospheres and carefully studied ergonomics, making her a joy to live aboard



Layouts to match all types of uses

Portside workshop as standard. Good amount of storage space with shelves along the hull

Very large sail locker that can be accessed from the cockpit bench

Chart table at the bottom of the companionway.
Drop down table top

Large U-shaped bench
Large fixed table

Very spacious fore cabin, large double bed (2.03 m x 1.60 m - 1.31 m / 6'8" x 5'3" - 4'4") with comfortable access to either side of the bed
2 large storage spaces: hanging locker and shelves
Open overhead shelves along the hull
Good view of the sea from the bed



Big bed (2.04 m x 1.37 m x 1.21 m / 6'8" x 4'6" x 4'),
Hanging locker
Ensuite shower room

Shower room with a spacious shower with a plexiglass door for easier use
Manual toilet with rigid 80 L / 21 US Gal tank

Very large C-shaped galley, long worktop, good refrigeration capacity, 190 L icebox with a 10 L freezer.
Stainless steel sink with 2 bowls
Overhead shelves and 2 base cabinets for storage.

Washbasin cabinet against the saloon bulkhead on **option**

Layouts to match all types of uses

Thanks to the hull's large interior volume two highly optimized versions are available for the requirements of the Charter market. The 2 variants of the bow section do not affect the saloon or galley spaces.



3C2T

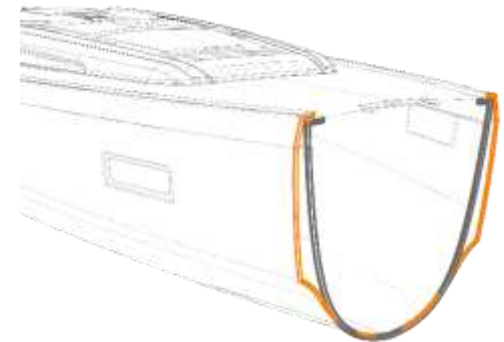
3C2T: a good layout for Yacht Management programmes
The owner has a spacious fore cabin with an ensuite shower room

Central queen size bed
Portside storage with hanging locker and shelves
Large ensuite shower room with shower compartment well protected by a plexiglas door



4C2T

4C2T: ideal for charter use.
The interior volume allows a layout with side cabin with bunk beds at the bow.
The main cabin still has plenty of bed space and an ensuite shower room



Harmony by Nauta



Base cabinet with a large storage capacity

Beige padded lining in the saloon as standard

Long hatch opening for a very comfortable companionway

White oak alpi atmosphere +
Rovere Aleve flooring

2 covered handrails,
gentle slope

Harmony by Nauta



Longue ouverture du capot pour une descente très confortable

Meuble bas avec grande capacité de rangements

Capitonages beige dans le carré en standard

Ambiance alpi Chêne flotté + planchers Rovere Alévé

2 mains courantes gainées, pente douce

Harmony by Nauta



Coaming glazing with pleated blinds as standard

Deck hatches with blind/mosquito net as standard

Ready to mount TV spot. **Option**

Chart table at the bottom of the companionway. Storage under the table top. Opening porthole above

Long hull portholes. Pleated blinds on **option**

Central removable seat. Standard in 3 cabin versions. Available on **option** for the 2 cabin version

Fixed table. Large table top 1.20 x 0.80 / 3'11" x 2'7"
Double berth **option** possible in the saloon (short table legs + mattress)

Harmony by Nauta



Harmony by Nauta



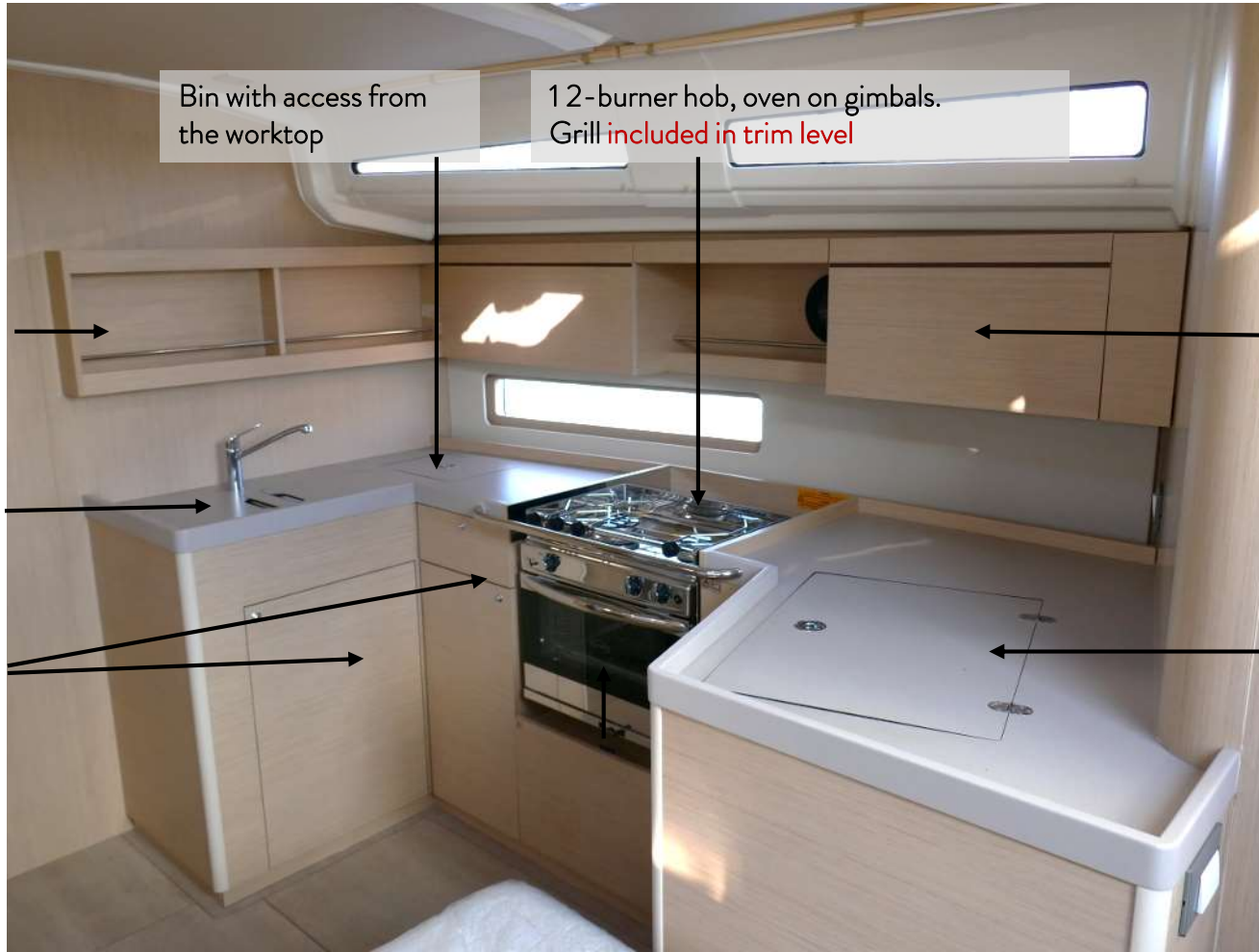
White oak alpi:
option

Beige padding
upholstery in saloon.
Standard

Neo 05
upholstery:
standard

Rovere Aleve
floors: standard

Harmony by Nauta



Bin with access from the worktop

12-burner hob, oven on gimbals.
Grill **included in trim level**

Storage in the overhead shelves

Closed storage or optional site for microwave

Double sink with covers matching the worktop (included in **trim level**)

Icebox 190 L including a 10 L freezer. Opening from above + front opening included in **trim level**

Base cabinet storage with shelves and cutlery drawer

Harmony by Nauta

Storage locker in the saloon

Large storage capacity:
1 front door and storage with access from the top at the back of the cabinet



Harmony by Nauta

Coaming glazing with pleated blinds as standard



The background is a solid blue color with several large, overlapping, semi-transparent circular shapes in a lighter shade of blue. These shapes are positioned in the top-left and bottom-right corners, creating a sense of depth and movement.

Ambiance

INTERIOR AMBIANCE

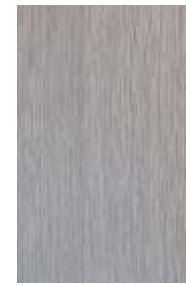
Wood & Floor

40.1

Alpi	Walnut	✓
	White oak	✓
Laminated floors	Rovere Alévé	✓
	Brown oak (only with white oak alpi)	✓



STANDARD: Walnut alpi + Rovere Alévé floors



OPTION: White oak alpi + Rovere Alévé floors



OPTION: White oak alpi + Laminated Brown Oak floors



INTERIOR AMBIANCE

INTERIOR UPHOLSTERY

40.1

Interior upholstery	Néo 05	✓
	Marlin Weiss	✓
	Winner Silver 139	✓
Covering on handrails	Anthracite	✓



Néo 05



Marlin Weiss



Winner Silver 139

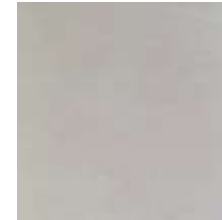
PADDING UPHOLSTERY

40.1

Saloon	Beige	✓
Cabines Included in Comfort trim level	Beige	✓
Saloon & Cabins	Macadamia	✓



Beige



Macadamia

EXTERIOR AMBIANCE

EXTERIOR UPHOLSTERY

40.1

Cockpit seats	Dolce 51	✓
---------------	----------	---

HULL COLOUR

40.1

Hull colour	White gel coat (RAL 9016) + hull decorated in metallic grey	✓
	Pearl grey gel coat (RAL 7004) + hull decorated in white	✓

Dolce 51



Cadet Grey



Pearl Grey



EXTERIOR PROTECTIONS

40.1

Covers	« Luxe » Cockpit table	Cadet Grey	✓
	Wheels	Cadet Grey	✓
Lazy Bag	Included in Classic Mast Pack	Natural	✓

COVERS – LAZY BAG

40.1

Sprayhood	Cadet Grey	✓
Bimini		✓
Cockpit aft closing		✓

Offered layouts



2C 1H+ workshop



3C 1H



3C 1H + optional washbasin
furniture in forward cabin. Also
available with the 2C1T layout



3C 2H



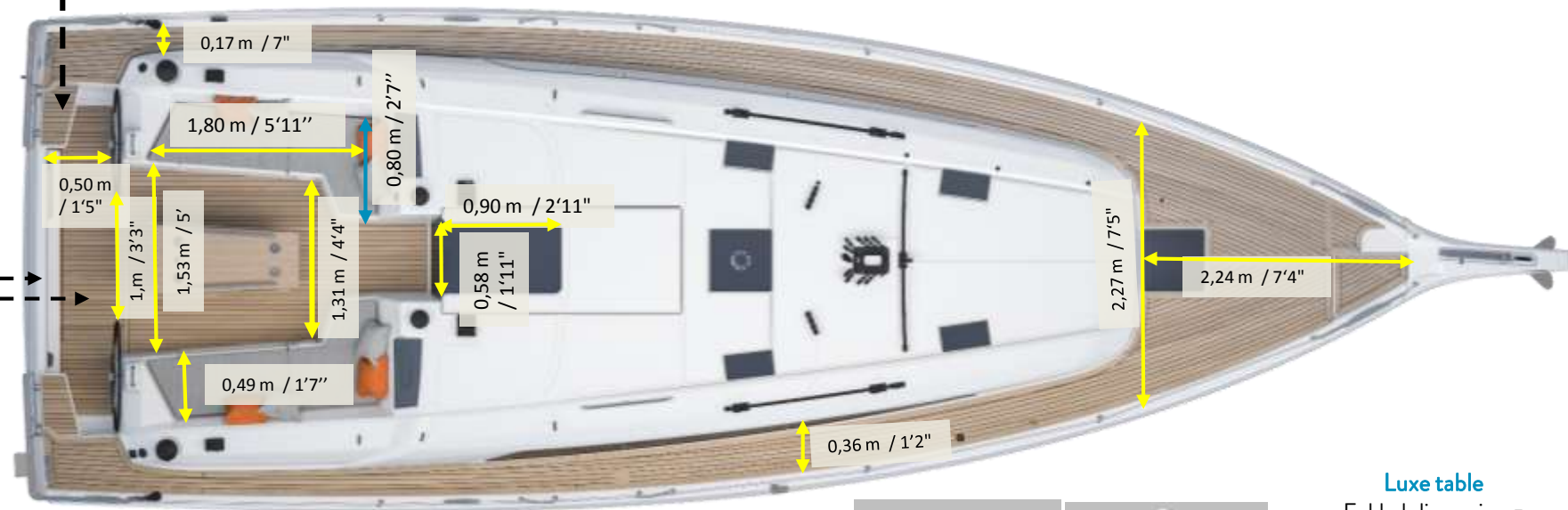
4C 2H

Exterior dimensions

Exterior dimensions

Aft platform:
2,65 m x 0,80 m / 8'8" x 2'7"

Aft helm'sman seat:
0,50m x 0,24 m / 1'8" x 9"



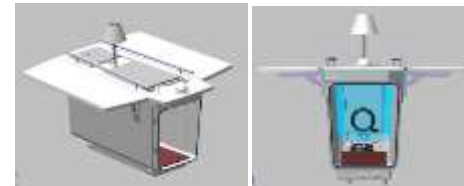
Gas locker
(0,39m x 0,39m / 1'3" x 1'3" - Height: 0,51m / 1'8")

Standard cockpit table:

Folded dimension = 1,20 m x 0,57 m / 3'11" x 1'10"

Wooden leafs = 1,15 m x 0,46 m / 3'9" x 1'6"

Opened width = 1,50 m / 4'11"



Luxe table

Folded dimension =
1,30 m x 0,50 m / 4'3" x 1'8"

Wooden leafs =

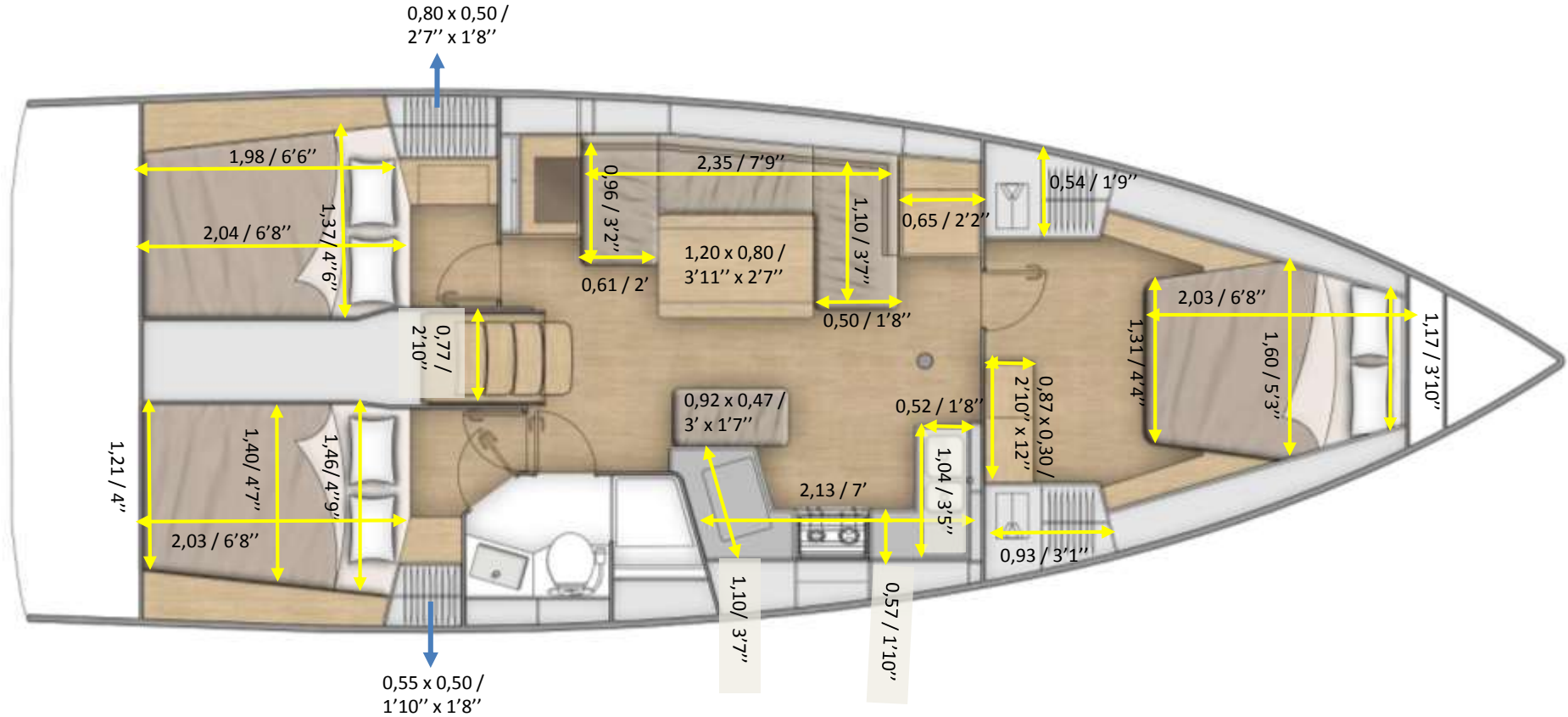
1,10 m x 0,40 m / 3'7" x 1'4"

Opened width =

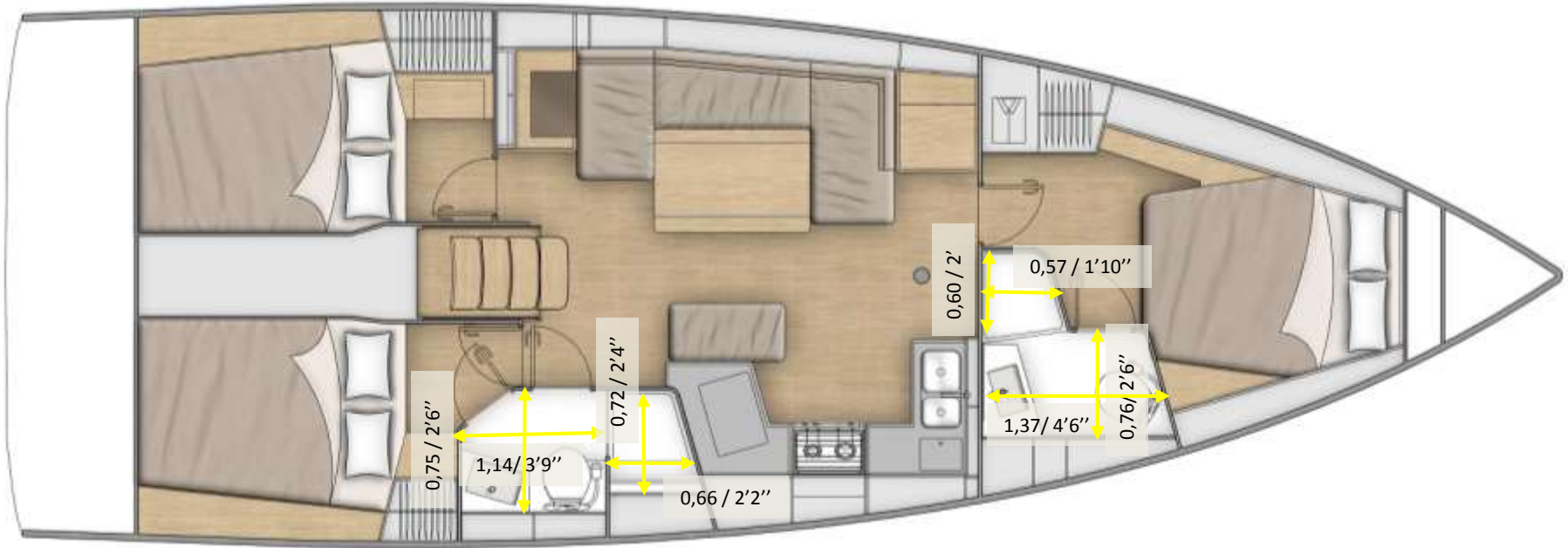
1,35 m / 4'5"

Interior dimensions & headrooms

Interior dimensions



Interior dimensions: head compartments



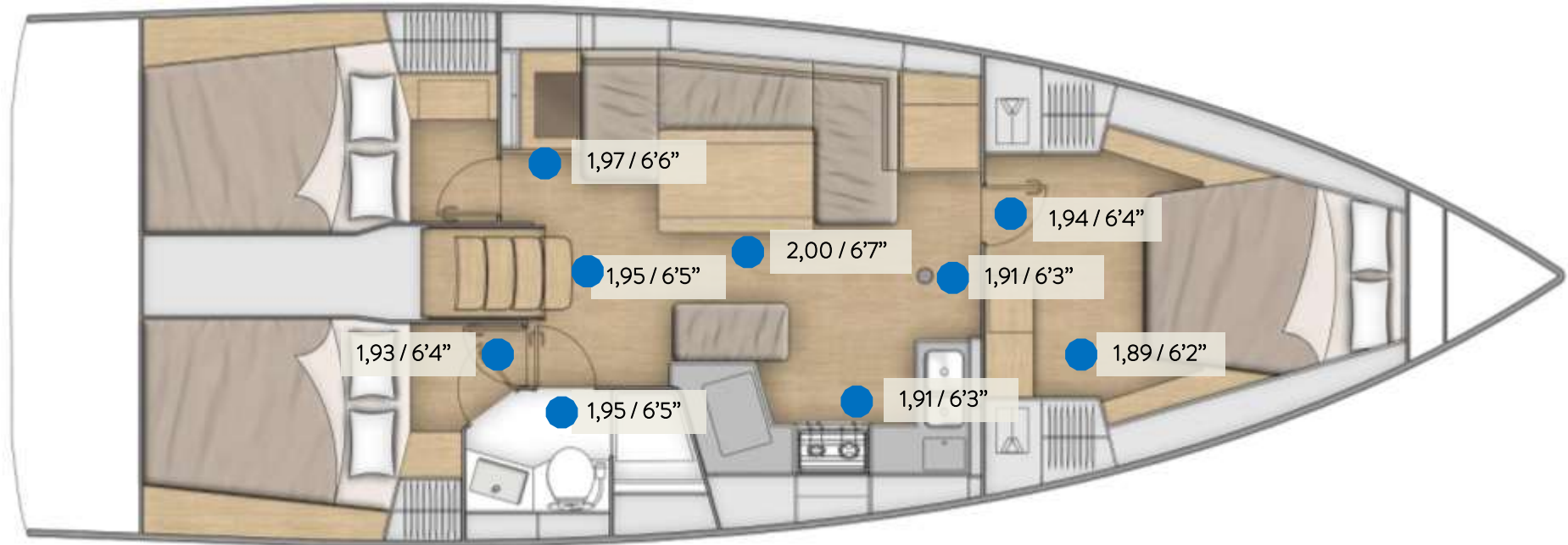
4C2H Interior dimensions

1 1,95 x 0,80 x 0,50 / 6'5" x 2'7" x 1'8"

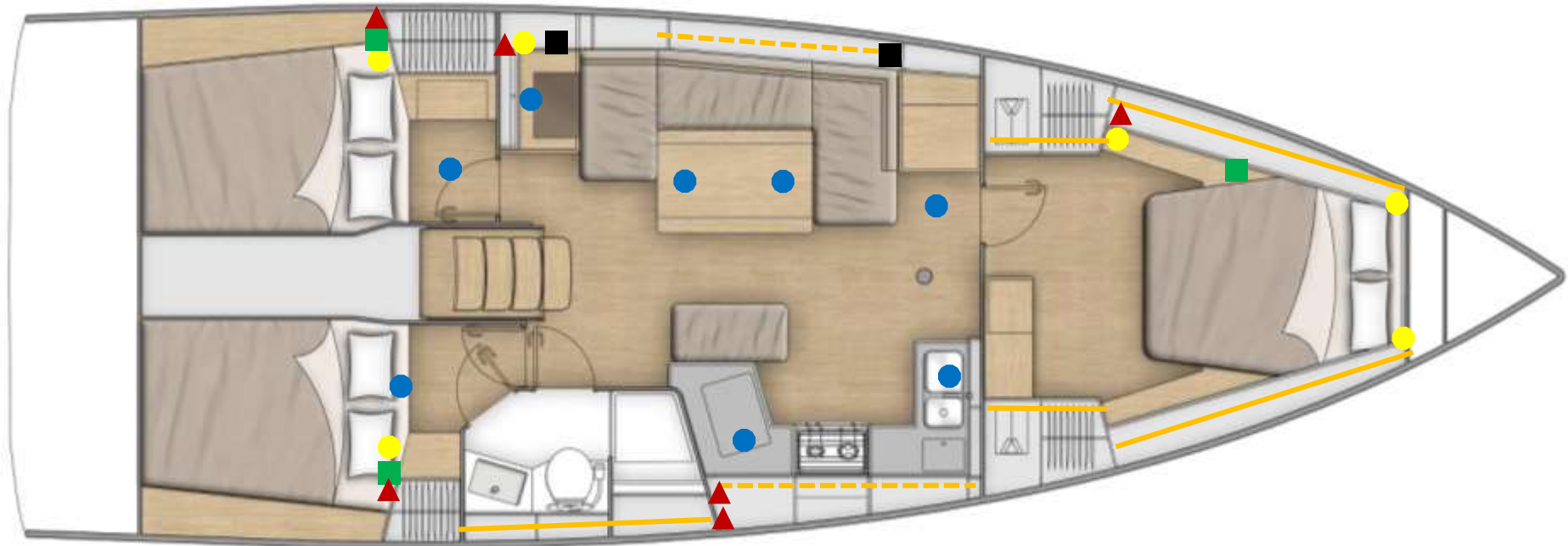
2 1,91 x 0,59 x 0,40 / 6'3" x 1'11" x 1'4"



Headrooms



Electricity location



● Overhead lights

● Spotlights

▲ 230V socket (Trim level)

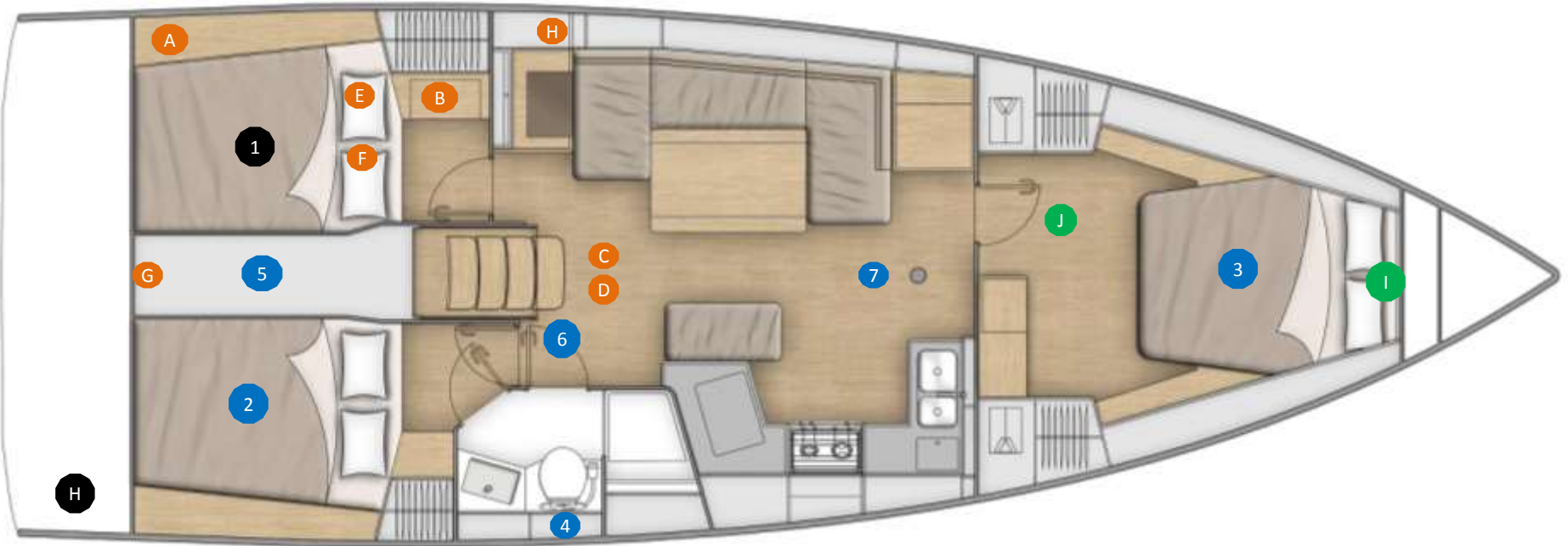
■ USB socket (standard)

■ USB socket (Trim level)

— LED strip (Standard)

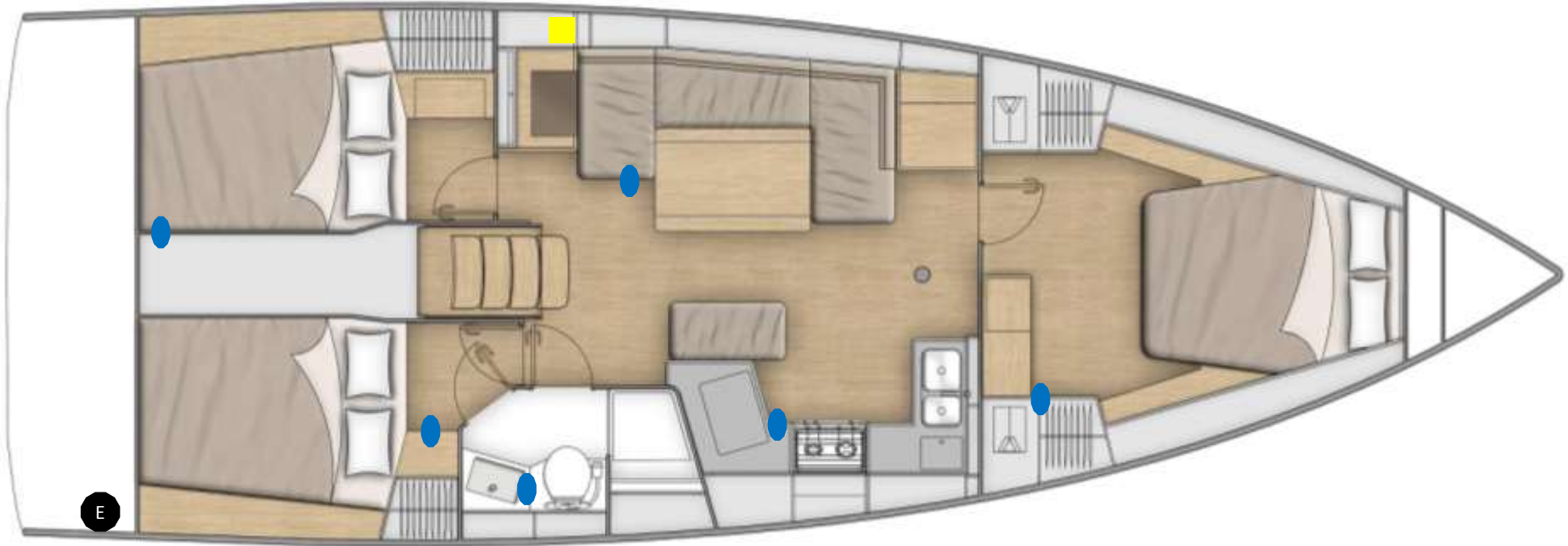
- - - LED strip (Trim level)

Technical equipments location





- | | | |
|---|--|--|
| <p>1 Fuel tank 195 L / 52 US Gal - standard</p> <p>2 Fresh water tank 195 L / 52 US Gal - standard</p> <p>3 Fresh water tank 330 L / 87 US Gal - <i>option</i></p> <p>4 Holding tank – 80 L / 21 US Gal - standard</p> <p>5 Water heater 40 L / 11 US Gal- standard</p> <p>6 Plumbing board (accumulator tank- water units.....)</p> <p>7 Bilge pump</p> | <p>A Electrical panel</p> <p>B 2 000 VA 12 V – 230 V Inverter- <i>option</i></p> <p>C 2 service batteries - AGM (100 Ah), <i>Trim level</i></p> <p>D 2 additional 100 Ah service batteries <i>Trim level</i></p> <p>E 1 battery charger (60 Ah) - <i>Trim level</i></p> <p>F 1 AGM engine battery (100 Ah) -- <i>Trim level</i></p> <p>G 6,4 KVA Generator- <i>option</i></p> | <p>H 12V Electrical panel</p> <p>I Bow thruster <i>option</i></p> <p>J Sensor <i>option</i></p> <p>H 5 500W Boiler - <i>option</i></p> |
|---|--|--|

Heating system



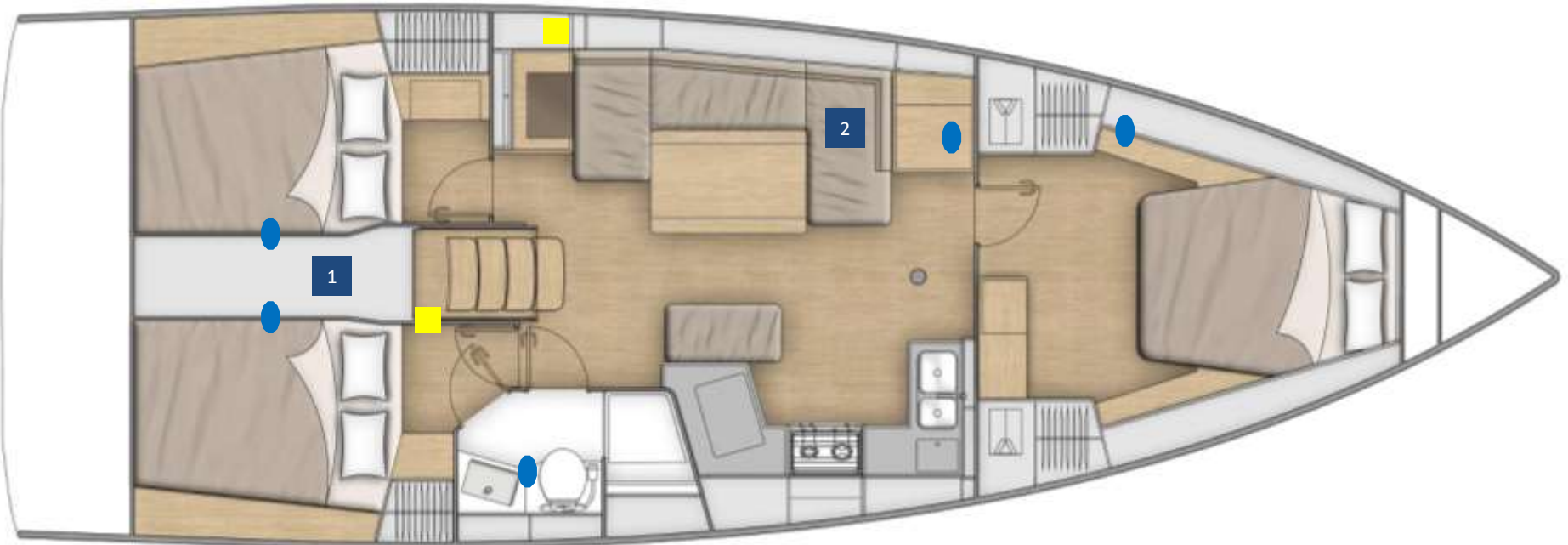
E Boiler - 5 500W - option

 Hot air outlet


 Thermostat

! Heating not compatible with air conditioning

Air conditioning



1 Air conditioning unit 8 000 BTU

 Air conditioning outlet

 Thermostat

2 Air conditioning unit 16 000 BTU

! Air conditioning not compatible with heating